

PharMix Agitators

Designed for demanding mixing applications, the PharMix top entering agitators lead the industry in performance and cleanability. These stainless steel drives are available in direct, parallel, and right angles with multiple impeller and mounting options. With patented in-vessel hygienic coupling and BPE compliant hygienic shaft seals (atmospheric or pressure), PharMix agitators meet any mixing need.

1000 Series

The 1000 series agitators are ideal for open top and non-pressurized applications such as ingredient preparation, pre-mixing, and compounding in vessels from 50-650L.

- Adjustable multi-axis mount settings and clamp-on design accommodates any setup
- Industrial-strength prop shaft with keyless shrink disc torque transmission for advanced performance



3000 Series

The 3000 series agitators are perfect for process mixing, media/buffer preparation, and other continuous agitation needs in vessels up to 750L. It also comes with single mechanical seals with or without a sanitary gland.

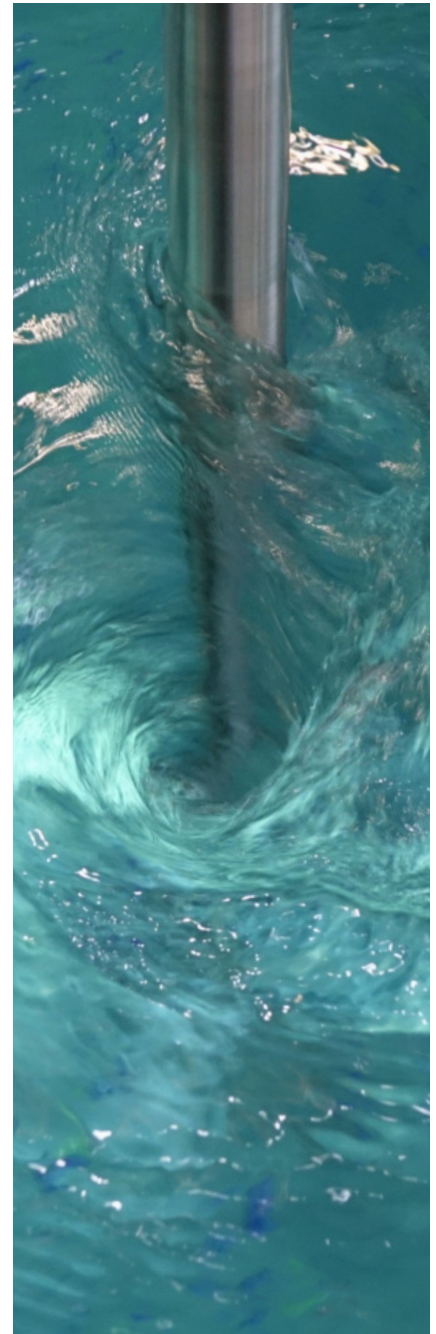
- Powerful SMI inverter-duty drive motor with parallel-helical gearing for quiet and smooth operation and reduced wear



4000 Series

The 4000 series agitators are excellent for any missing applications for high volumes (up to 2,500L). The polished right angle drive comes in a compact low-profile design with space saving tri-clamp mounts. This is the agitator of choice for mixing.

- Robust prop shaft with keyless shrink disc torque transmission for advanced performance
- Multiple impeller options and shaft seal selections available, including single mechanical seals (with or without sanitary gland) and double mechanical seals.



Superior Sanitary Mixing

D-Series/MD-Series

The D-Series agitator is ideal for small-scale mixing requirements for research and development and pilot plant needs. The powerful torque and high RPM capacity makes the D-Series ready for a wide range of applications for all types of products in vessels up to 200L.

- Direct drive and direct in line planetary gear reduction available.
- Durable prop shaft is designed for extreme low level mixing and speeds to 850 RPM.
- Multiple impeller options and shaft seal selections available, including single mechanical seals (with or without sanitary gland) and double mechanical seals.



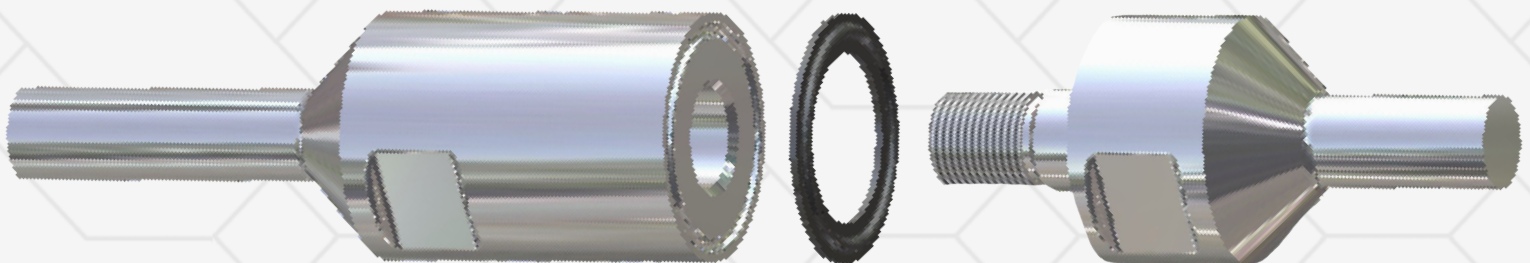
PharMix MSP (Mechanical Seal Port)

Eliminate welded sanitary fittings with the PharMix MSP. The flush interior creates a smooth profile for easy self-draining and a true hygienic connection with removable nozzle on any agitator mechanical seal.

- Snap-on self-centering gasket design makes installation and maintenance easy.
- Available in standard 1/2" hygienic (tri-clamp) fitting connection (other fitting styles available).
- Low-friction TufSteel gasket won't bind, ripple, or compress when tightened.

PharMix Seal Hygienic Coupling

Our patent pending hygienic coupling is ideal for multi-product mixing where impellers are changed to match processing requirements or when one-piece continuous shafts cannot be installed. The unique design can be used above or below product surface and accommodates frequent equipment inspections and superior cleanability.



DCI, Inc.
600 North 54th Ave
St. Cloud, MN 56303
Phone: 320-252-8200
www.dciinc.com

Stay up to date with everything DCI, Inc.!

